

# CHARACTERISTICS AND INSTALLATION

## Dgeum tiles 10x20 cm with 18 mm thickness

They are composed of cement, a mixture of several stones of balanced granulometry between 0.2 and 2 mm thick, silica sand that provides anti-slip properties and marble powder that facilitates the compaction of the entire mass.

They are manufactured at high pressure, with more than 300 kg/cm<sup>2</sup>, to achieve great technical performance with a low tile thickness.

They are very resistant and placed on a firm base they are able to support heavy loads.

We supply them in pallets of 33 m<sup>2</sup>.

### Characteristics

Flexural strength: 84 kg/cm<sup>2</sup>

Compressive strength: 450 kg/cm<sup>2</sup>

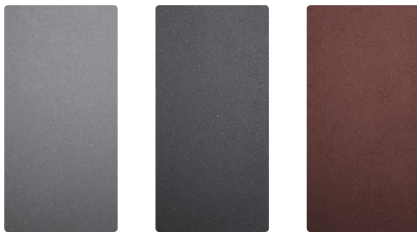
Wear resistance: 1,2 mm

Water absorption: 5,3%.

Anti-slip type C3

Resistant to frost

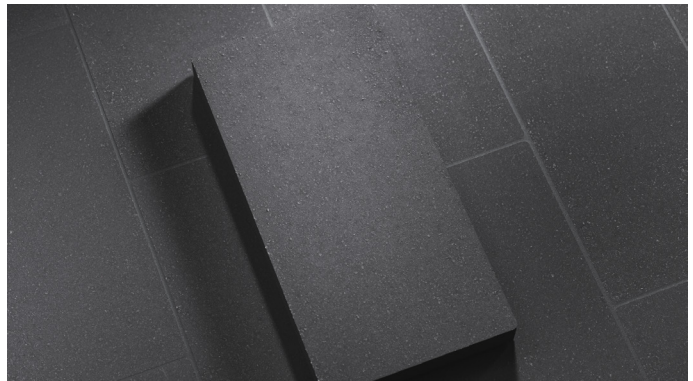
### Colors



GREY

BLACK

TERRA



INSTALLATION SECTION

### Installation

1. Fill the surface with a concrete screed and allow to dry.
2. Prepare a 1.5 to 2 cm thick mortar. The composition of the mortar has to be one part cement and six parts sand.
3. Level and sprinkle with cement.
4. Then lay our completely dry tiles.
5. To fill the joints, make a sweep with fine sand and dry cement.

